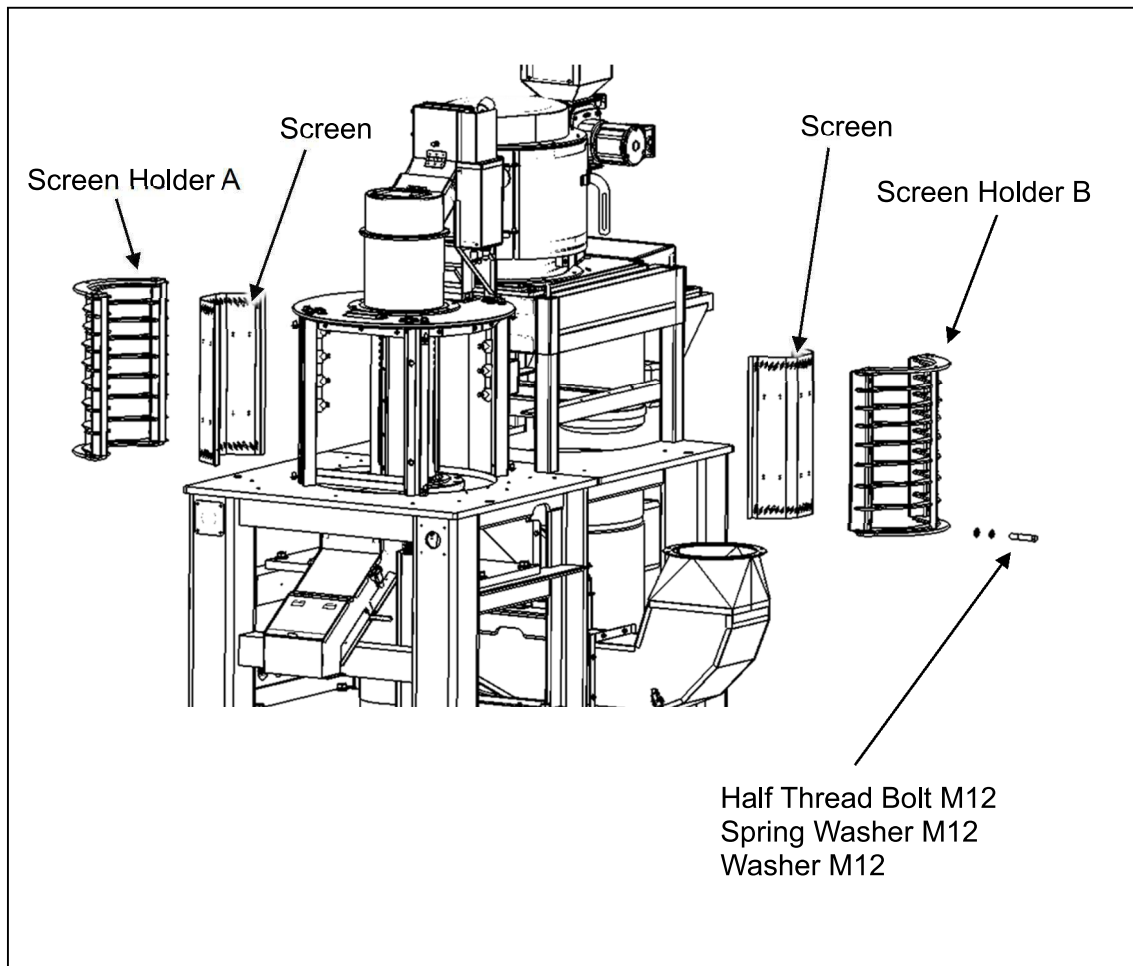


5.4 Replacing consumable

5.4.1 Replacing the Screen



- ① Remove Bran Case F and G (Refer to P.49).
- ② Remove Bolt Half Thread Bolt M12, Spring Washer and Washer (each 10 pcs), and take out the Screen Holder A, B and Screens.
- ③ Clean the bran from the Screen Holders, Screens and places where parts attach, and then install the new Screens.

NOTE

- If bran, etc. is not removed, the screen may not set correctly and could be damaged by vibration.
- Make sure to turn the power off before conducting.